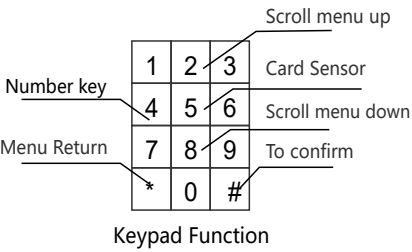


Setting Guide

Insert the battery after installation before start. For security reasons, the administrator password (initial administrator password 123456) should be replaced immediately. If the administrator password has been successfully registered, the original administrator password will be automatically replaced.

Keyboard Features:

- Press "**": Menu Return / Outdoor Lock
- Press "#": Confirm / Doorbell
- Press "2": Scroll menu up
- Press "8": Scroll menu down
- Press "5": card usage area



2.1 Enter the main menu

After verifying the administrator's finger vein ID or password, immediately press the "#" key to access the menu interface (in compound verification mode, this step must be an administrator ID).
Note: The factory default administrator password is 123456 when the door lock first in use.

2.2 Add user

2.2.1 Add administrator finger vein(Code 001~010)

After confirming the administrator (administrator's finger or password), press "#" to enter the main menu→ Select "Add user".→ Select "Add finger vein"→ Locate your finger three times after the voice guidance → Administrator added successfully (finger vein ID can be added continuously)

2.2.2 Add user finger vein(Code 011~090)

After the administrator has verified (finger or password), press "#" to enter the main menu → select "Add user" → select "Add finger vein" → select "Add user" → locate your finger 3 times following voice guidance → User added successfully (finger vein ID can be added continuously).

2.2.3 Add security vein ID (Code 091~100)

After the administrator has verified (finger or password), press "#" to enter the main menu → select "Add user" → select "Add finger vein" → security vein ID successfully added (finger vein ID can be added continuously)

2.2.4 Add administrator password(Code 101~110)

After the administrator has verified (finger or password), press "#" to enter the menu interface → select "Add User" → select "Add Password" → select "Add Admin" → enter the same administrator password twice → Administrator password registered (password can be added continuously)

2.2.5 Add user password (Code 111~200)

After the administrator has verified (finger or password), press "#" to enter the main menu. → Select "Add user". → Select "Add password". → Enter the same user password twice. → password to be added continuously added)

2.2.6 Add IC card (Code 111~200)

After the administrator has verified (finger or password), press "#" to enter the main menu. → Select "Add User". → Select "Add IC Card". → IC card registered (added continuously)

2.3 Delete user

2.3.1 Delete ID number

After the administrator has checked (finger or password), press "#" to open the main menu → select "Delete user" → select "Delete user ID" → enter the ID number, press " #" to confirm → ID number deleted (The code can be deleted continuously.)

2.3.2 Finger vein deletion (all users except administrator)

After the administrator has verified (finger or password), press "#" to enter the main menu. → Select "Delete user". → Select "Delete finger vein". → All users except the administrator are deleted completely.

DM-L900

Finger Vein Automatic Smart Door Lock

Finger Vein Smart Door Lock User Manual



Hotline : 400-68-55531 (CHINA) +852-3152-2128 (Oversea)
Tech Team : +86-755-86955531 Site: www.mytime.com.hk

IMPORTANT NOTES

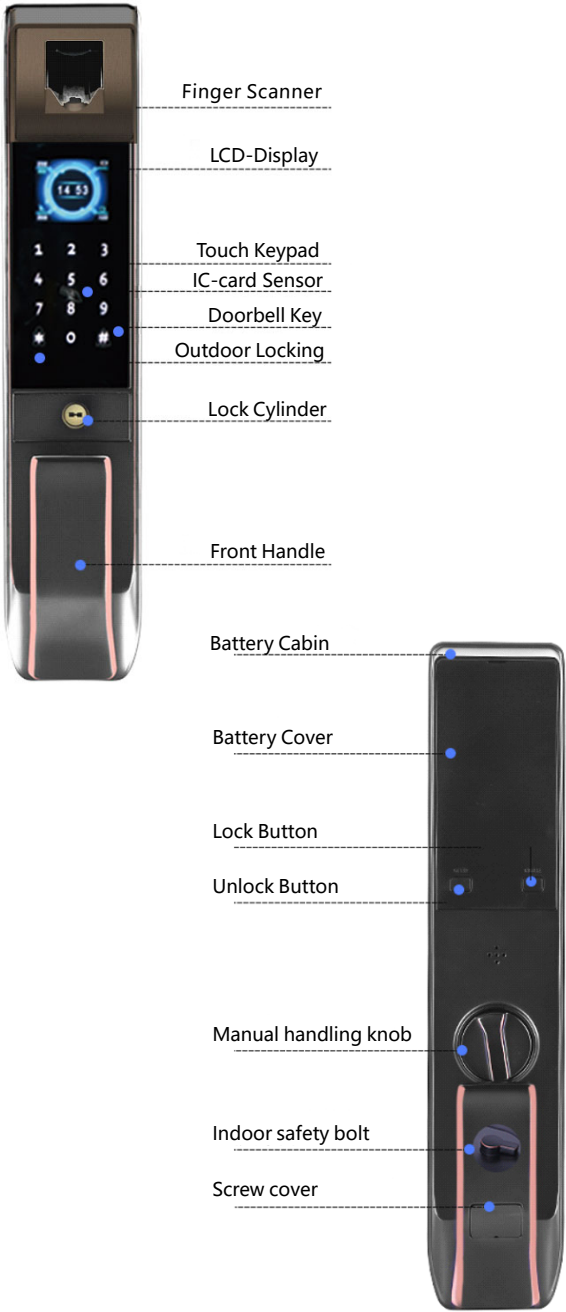
Thank you for choosing MYTIME Finger Vein Automatic Smart Door Lock DM-L900.
Please read this manual carefully before installation or use. Please do not throw away the manual, you may need to read later for maintenance or aftersale.
The copyrights are protected and belongs to MYTIME. All rights reserved.
The specifications may vary due to upgrades or improvements in the production. All statement and explanation rights are reserved to MYTIME.

Specifications

1.1Parameter:

Administrator vein ID, password	10 Vein ID, 10 Password
User veins ID, password	80 Vein ID, 90 Password
Emergency user's veins ID	10 Vein ID
IC-card	100 IC-card
Thickness of the door	35mm ~ 120mm
Password Length	6-10 Digits (random protection digits are supported)
Unlocking method	Single or compund method
Swipe card type	IC-card
Standby power consumption	Less than 88uA
Battery duration for 1 charge	About 3-4 months
Battery voltage	7.4 V / 2600mAh Lithium battery
Emergency power	Micro-USB DC 5V
Working temperature	-20°C ~ 60°C

1.2 Produktabbildung



Beachten



MYTIME TECHNOLOGY HOLDINGS LIMITED

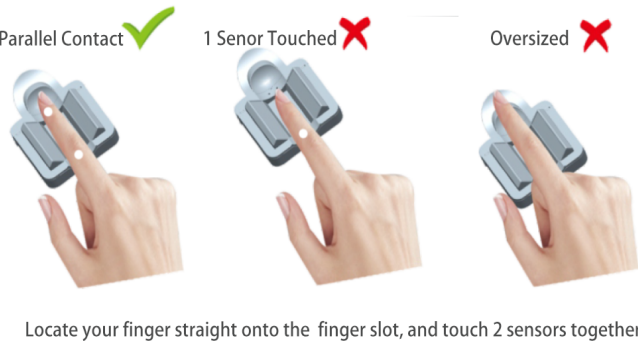
The equipment is made in precision and should be installed by a professional locksmith or at least with some experience in smart lock installation.

If you need to do the installation yourself, make sure you have the right tools, and contact our local representative for installation instructions.

Charge the battery before installation.

Keep the technical keys in a safe place in the open air (for unlocking in an emergency).

Please register or verify your finger as following brief guide:



China Headquarter
RM 1186-1188, 11/F, SDGI Building, No.3 Qiongyu Road
Shenzhen, P.R. China

International Headquarter
RM 1403, 14/F, Yue Xiu Building, No.160 Lockhart Road
Wan Chai, Hong Kong

©Mytime Technology Holdings Limited. All Rights Reserved.

2.3.3 Delete password (all users except administrator)
After the administrator has verified (finger or password), press "#" to enter the main menu. → Select "Delete user". → Select "Delete password". → All user password except the administrator will be deleted

2.3.4 Delete IC card
After the administrator has verified (finger or password), press "#" to enter the main menu. → Select "Delete user". → Select "Delete IC card". → All user IC card will be deleted

2.4 System settings
2.4.1 Time setting

After the administrator has verified (finger or password), press "#" to enter the main menu → select "System Settings" → select "Time Settings" → scroll "2" and "8" at year / month / day / Hour / minute / second → confirm setting with "#"

2.4.2 Unlock mode (single mode, finger + password, Finger + IC card, two finger vein ID)
After the administrator has verified (finger or password), press "#" to enter the main menu → select "System Settings" → select "Unlock Mode" → select the appropriate mode → press "#" to change the setting to to confirm.

2.4.3 Volume settings
After the administrator has verified (finger or password), press "#" to enter the main menu → select "System Settings" → select "Volume Settings" → scroll "2" and "8" to adjust the volume → press "#" until confirm setting.

2.4.4 Reset factory settings
After the administrator has verified (finger or password), press "#" to enter the main menu → select "System Settings" → select "Restore Factory" → press "#" to confirm the setting. Note: After removing the battery cover, press the reset button in the square hole for 2 seconds, follow the voice guidance and press the "#" button to confirm the settings.

2.5 System query
2.5.1 Door opening record (max 800 events, cyclic recording)

After the administrator has checked (finger or password), press "#" to enter the main menu. → select "System query". → select "Open Door Record". → confirm to display the last 800 events

2.5.2 Product information
After the administrator has verified (finger or password), press "#" to enter the main menu. → select "System Query". → select "Product Information". → confirm to check the version and ID number of the lock

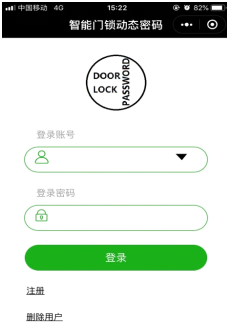
2.6 Install setting (depending on door opening direction)
After the administrator has verified (finger or password), press "#" to enter the main menu. → select "Installation and Debugging". → select "Right open" or "Left open". → confirm to set the direction of the cylinder tongue

2.7 Self-elastic cyclinder (if lockbody with self-elastic cylinder please turn on the self-elastic mode)
After the administrator has verified (finger or password), press "#" to enter the main menu. → select "Self-elastic lock". → select "ON". → confirm the mode chosen

2.8 language settings
After the administrator has verified (finger or password), press "#" to enter the main menu → select "Language Setting" → select the language → press "#" to confirm the setting

WeChat APP Manual

APP-Name: Dynamic password for Smart Door Lock
3.1 Configuration of the WeChat APP
① In WeChat, search for "Smart Door Lock Dynamic Password" and enter the WeChat micro program interface.



② Click "Register" to enter the user interface for account registration (check "System query" → "Product information" in the lock menu, to get the lock ID number), enter "Door Lock ID", "Login Account", "Login Password", and click "Register" to complete the registration.



Log in, click on "Dynamic Password" to get the temporary password to generate the door open. You can give this instant password to the person and she enters the temporary password to unlock the door.



Important

Administrator password must replaced before using the mobile instant password feature.

Set the time on the locking system same as on your mobile phone before using a dynamic temporary password.

The temporary password is valid for 5 minutes and the new temporary password can be updated every 1 minute.

After restoring the factory settings, the door lock ID changes accordingly. The mobile phone needs to be registered again.

Troubleshooting

4.1 Emergency unlocking from outdoor side

If the battery is in low level to unlock, insert a 5V micro USB cable (from juice pack) into the bottom of the lock to power and process unlocking, then remove the battery cabin cover to recharge it, or use the lock mechanical key in accessory for unlocking.

4.2 Emergency unlocking from indoor side

If the lock is completely damaged and can not be unlocked automatically, press the mechanical knob and turn it manually to unlock it.

4.3 Automatic locking in the open air

If an outdoor lock is required, press the "*" key to automatically activate the lock.

4.4 Automatic locking & unlocking indoor

Press the "OPEN" and "CLOSE" buttons under the battery cover to perform automatic unlocking or locking inside your room.

4.5 Manually lock from indoor side

Push and turn the manual knob to lock and there is a mechanical safety latch to improve the locking state.

4.6 Remarks

The default password 123456 is set only for the first time and will be replaced once the administrator password is registered.

Restore factory settings to clear all data: Locate the small pinhole under the battery cabin, press the button inside the hole with a pin and hold for 2 seconds. Then press "#" on the front panel to restore the factory settings.

After five failed finger vein / IC card / password verification attempts, the system freezes for about three minutes with security alert.
Secured password entry: for example, if the correct password is 888888, you can input some random number before and after the password, eg. xxxxx888888xx and press # to continue unlocking.

When the battery needs to recharge, the lock will automatically alert with a sound and message. Please charge the battery in good time.

Installation Guide

Installation Tip

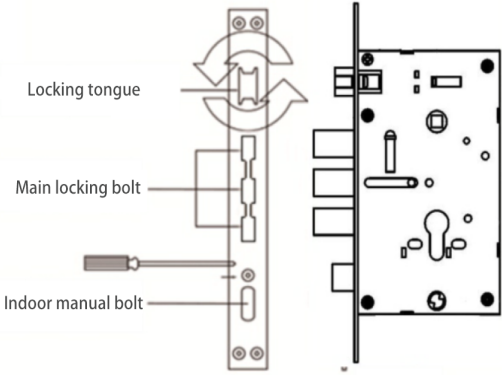
Step 1: Stand outward and in the direction of the door opening direction of the door, and adjust the direction of the cylinder lock tongue accordingly.

Step 2: Drill the door and door frame according to the drill drawing (including the mounting bolt hole, key lock core hole, drive axle hole, lock housing groove), insert the lock body into the door groove, and insert the key lock core , Then tighten the screw of the lock core in the lock body.

Step 3: Attach the front and back piece, connect the power cord and insert the square axle of the lock cylinder and the square shaft of the reverse lock at the correct place. Locking core in the lock body.

Step 4: Drill the slot of the latch box into the door frame that corresponds to the position of the lock body and attach the latch box. Secure it to the frame with screws.

After installation, adjust your lock and unlock status and continue to troubleshoot the setting until it runs smoothly.



* Factory standard lock cylinder.
It may vary depending on the requirements of your door.

Remarks

The mechanical keys must be carried or kept in a safe place outdoor.
Please register the administrator after the installation.
Make sure the door is locked when going out.
Do not disassemble or forcibly press and pull the lock.
Do not allow corrosive liquids to penetrate inside the product.
If the battery is not sufficiently charged, please charge it in time.



www.mytime.com.hk